



# WIN INCUBATION FOR NURTURING & GUIDING STUDENTS (WINGS)

Incubation Center for nurturing Student  
Entrepreneurs & Start-ups

Seed Funding Support for promising ideas  
and start-up mentoring

Psychometric Assessments & Counselling  
for Transformation (PACT) Center

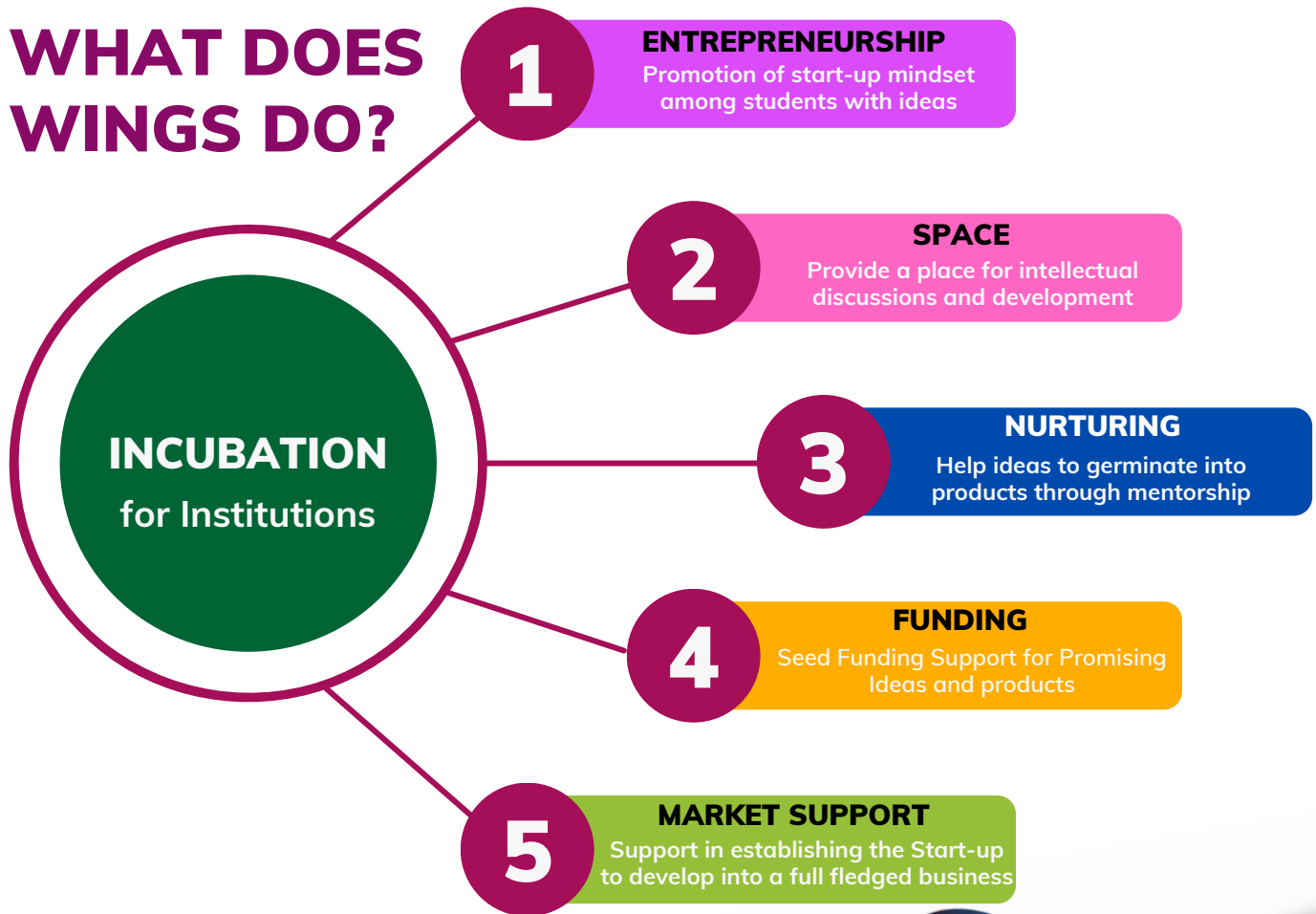
Guidance for Research & International  
Presentations (GRIP) Center

Skill Training Engagement with  
Placements (STEP) Center



# Building an Entrepreneurship Eco-System within Partner Institution

## WHAT DOES WINGS DO?



**BUSINESS  
INCUBATOR**

# BENEFITS TO INSTITUTIONS

## **Commitment to Entrepreneurship**

Shows the Institution as a place that is deeply committed to nurturing entrepreneurial and personal development spirit among its students.

## **Holistic Education**

This holistic approach to building ideas into products encourages creativity and problem-solving skills, two cornerstones of entrepreneurship in the region.

## **Nurturing Entrepreneurial Mindset**

This initiative will display the commitment of the Institution to foster entrepreneurial spirit among students. Such initiatives build reputation as well as add value while applying for accreditations.

## **Recognitions and Awards**

Institutions receive accolades for their efforts in promoting entrepreneurship from Government and non-government bodies. These recognitions underscore the institution's dedication to producing future-ready entrepreneurs.

## **Requirements for WINGS Center**

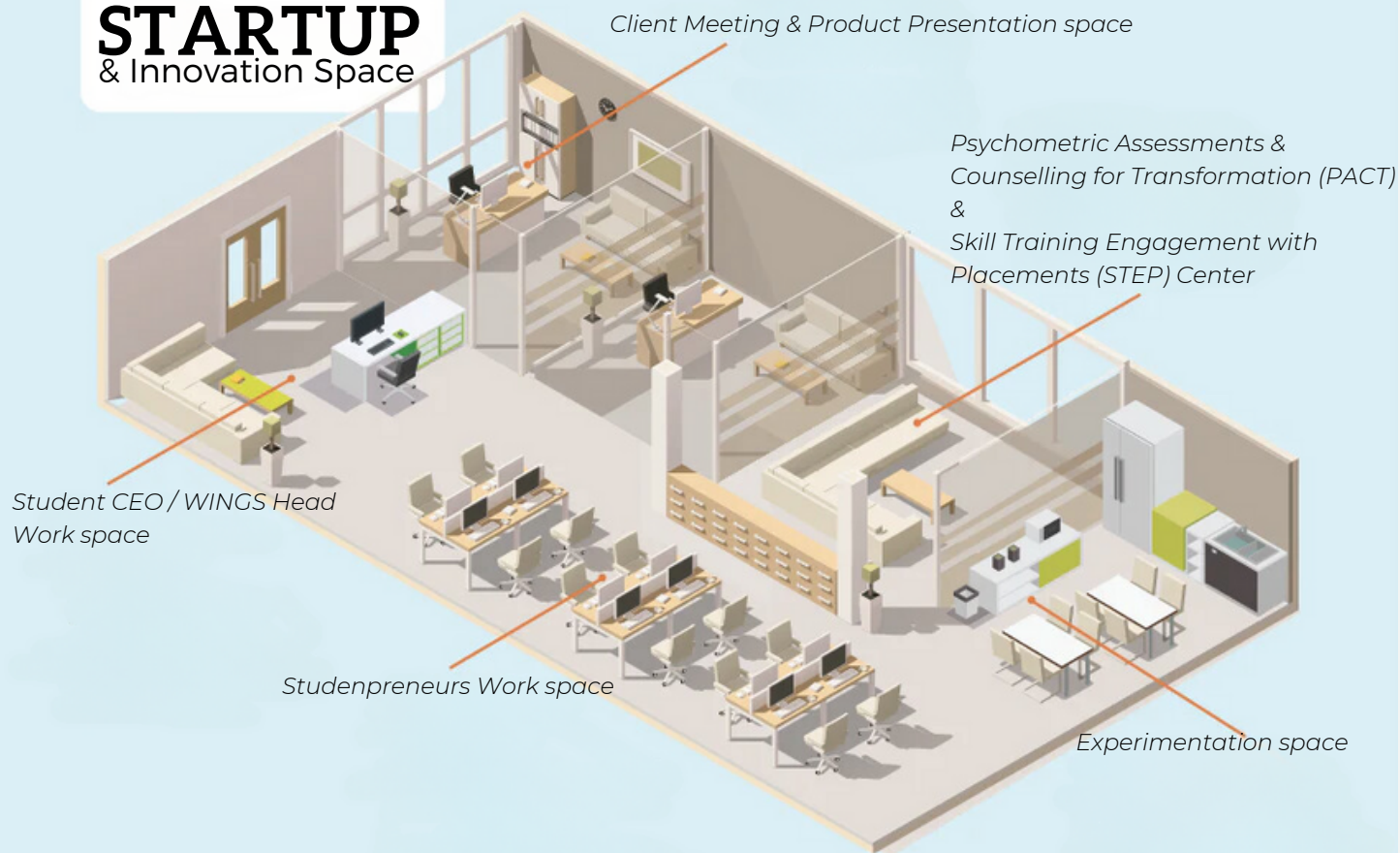
- One room of a 20X20 size or a classroom size facility within the premises in a well-visible area
- Basic infrastructural support like partitions, records closet, 60" TV, desks, and chairs that fit the Institution's budget
- A co-branded signboard outside the WINGS center detailing the WINGS services
- A co-branded hoarding of WINGS at the institution premises visible to the public detailing WINGS services
- Support by Institutions to do co-branded promotions in local media and among students
- One active student volunteer who would work with the WINGS team as coordinator for the center. This will be a paid part-time profile with the designation of "Student CEO"





# WIN INCUBATION FOR NURTURING & GUIDING STUDENT-STARTUPS (WINGS)

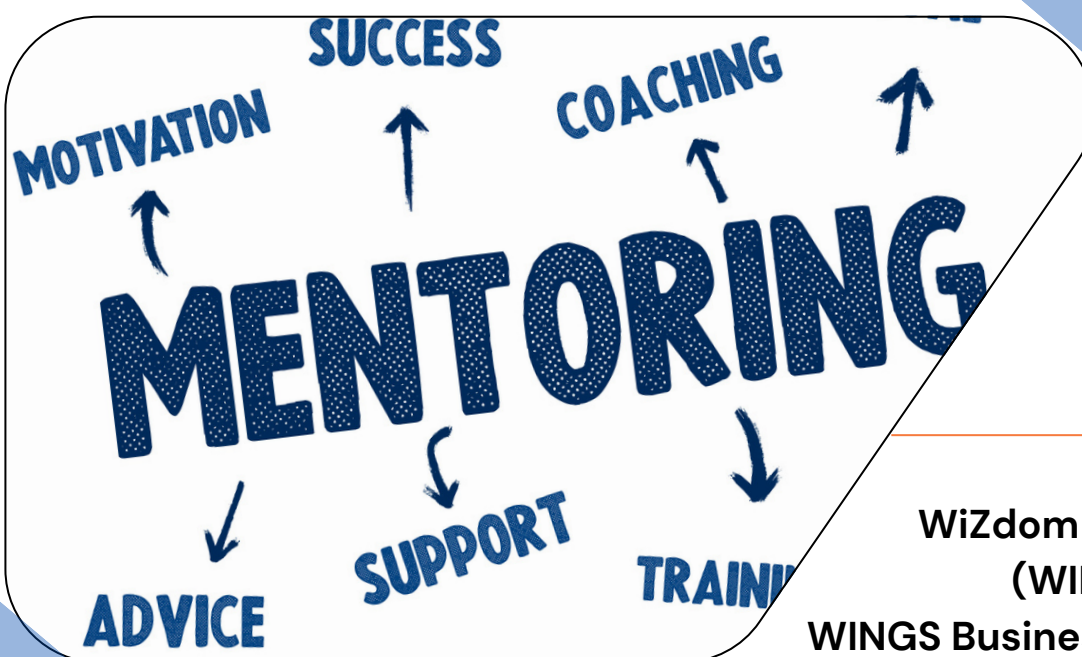
## **STARTUP** & Innovation Space



**Model design for the WINGS Center at Institutions**







## Role of WiZdom Institutions Network (WIN) Mentors in setting WINGS Business Incubation Center

**WIN Mentors** can offer guidance, support, and advice on navigating the complex world of startups. Our access to a huge network of national and international corporate leaders and start-up investors would be utilized to build such an eco-system.

### GUIDANCE & MENTORS

**WIN Mentors** can help student entrepreneurs develop the skills needed to be effective business leaders and all technical know-how from business planning to fundraising to product and market development.

### SKILLS DEVELOPMENT

### PLANNING & FEEDBACK

**WIN Mentors** can provide feedback and help student entrepreneurs identify their strengths and weaknesses. Help them understand the difference between planned approach to start a venture and unplanned.

### FUNDING SUPPORT

**WIN Mentors** can provide startups with access to office space, funding, and mentorship. Professionals at WIN can offer introductions to business partners, potential clients, or investors.



## WiZdom Institutions Network

MANGALORE | UDUPI | MANIPAL | HASSAN | PUTTUR | MOODBIDRI | SHIMOGA | BANGALORE | JAIPUR | DUBAI

9480462288 7892205489  
8867434568 8169600408

Follow us: WisdomED

@wizdom.ed

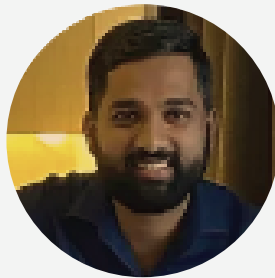
winglobal.co.in/wizx.org

hello@wizx.org

# KEY MENTORS & VENTURE SUPPORT FOR WINGS PROGRAM



**DR. FRANCISCA TEJ**  
B.Ed, MBA, MHRM, MS (Psy), PhD



**DEEPAK BOLOOR**  
BHRD, MBA (NIT-K)



**DR. GURU TEJ**  
MBA, MS(Psy), APPM (IIM-K), PhD



**ARUN KUMAR**  
MCom, DTT, IATA



**HARSHA RAMACHANDRA**  
BHM, MHM (Australia)



**KOWSHIK GOWDA**  
BE (Aero), MBA (Ops)



**DR. RAJESH SHARMA**  
MBA, M.Com, PhD



**DR. TEJASWINI EREGOWDA**  
BE, MTech, PhD (Europe)



**VIVEK VACHHANI**  
B.Tech, MBA (PGDM, IIM-I)



**ABHILASH KSHTRIYA**  
BTech, MTech (MIT)



**HARI TEJ**  
BHM, MBA (IB & Ops)



**SANDEEP KUMAR**  
MCom, MBA, LLB



# INDUSTRY MENTORS & GUIDES



**BERNAAD R CHETTY**  
Vice President  
J P Morgan Chase, India



**SUNITA REBECCA CHERIAN**  
Senior Vice President  
Wipro Ltd, India



**THUKARAM POOJARY**  
Senior Vice President  
Reliance Ltd, India



**ANAND PILLAI**  
Managing Director  
IUEL Group - Germany & France



**TANVI GOEL**  
Founder CEO  
AusIndia Travel Net, Australia



**CSILLA ROSTAS**  
Legal Advisor & Mentor  
Germany



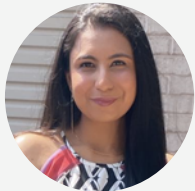
**ROSE BERNADETTE**  
Change Leader  
Alghanim Industries, Kuwait



**PETER PINTO**  
Founder President  
FK Foundation, India



**DEEPAK MEHTA**  
Angel Investor  
United States of America



**NANCY GOVIN**  
Angel Investor  
Australia



**ANDREW GIDDIE**  
Start-up Mentor  
South Africa



**LEDELYN DUMAGUIN**  
Investor & Start-up Mentor  
Philippines

## WIN CORPORATE CONNECTIONS



IMAGES FOR EDUCATIONAL PURPOSES ONLY.

Key people in senior positions with over 300 major companies in India are connected with WIN leaders through various networks and business circles.

Apart from major corporates a huge group of entrepreneurs and business tycoons cutting across geography are connected to the WIN leaders.

These corporates and businessmen are ever-ready to invest in emerging young minds and help in their start-up journey if the business plan is promising. They would also support in mentoring and nurturing start-ups till the firm can get a hold in the market.

# WIN PORTFOLIO

## WIN INCUBATION FOR NURTURING & GUIDING STUDENT-STARTUPS (WINGS)

Student Entrepreneurship Mentoring  
**Incubation Center management in Institutions**  
Seed Funding Support for promising ideas

## HIGHER EDUCATION LEARNING & PLACEMENTS (HELP)

1200+ University Partners in 46 Countries  
Over 6000 students guided till date  
**Free Counselling & Mentoring**

## COMPETITIVE EXAMS PREPARATION (TEST PREP)

**CAT / MAT / KSET / NET**  
IELTS / TOEFL / GRE / GMAT / SAT  
French / German (A1 & A2) / English

## PSYCHOMETRIC ASSESSMENTS & COUNSELLING FOR TRANSFORMATION (PACT)

Psychometric Assessments & Career Counselling  
Placement Training and Placement Assistance  
**Scholarships Identification & Application Support**

## TOURS FOR RESEARCH & INTELLECTUAL PROGRESSION IN STUDENTS (TRIPS)

Skill Oriented Trainings & Workshops  
Delivered by International Trainers  
**At International Destinations**

## GUIDANCE FOR RESEARCH & INTERNATIONAL PRESENTATIONS (GRIP)

Support for STEM-related Research Presentations  
Sponsorship for Conference Participation  
Help in Collaborative International Conferences

## DOCTORATE FOR CORPORATES (D4C)

Registration Guidance for International Doctoral Programs  
Mentorship for preparing the Research Proposal  
**International Doctoral Program Progression Support**

## SKILL TRAINING ENGAGEMENT WITH PLACEMENTS (STEP)

Aviation & Hospitality / Digital Marketing / Website & App Development / GST & Auditing  
**3 months On-Campus Intensive Training + 6 months PAID Internship**



### Wizdom Institutions Network

MANGALORE | UDUPI | MANIPAL | HASSAN | PUTTUR | MOODBIDRI | SHIMOGA | BANGALORE | JAIPUR | DUBAI

9480462288 7892205489  
8867434568 8169600408

Follow us : WizdomED

@wizdom.ed

winglobal.co.in/wizx.org

hello@wizx.org